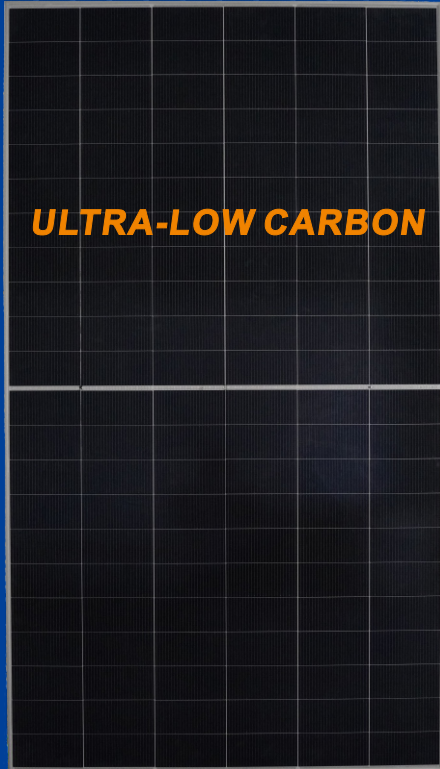
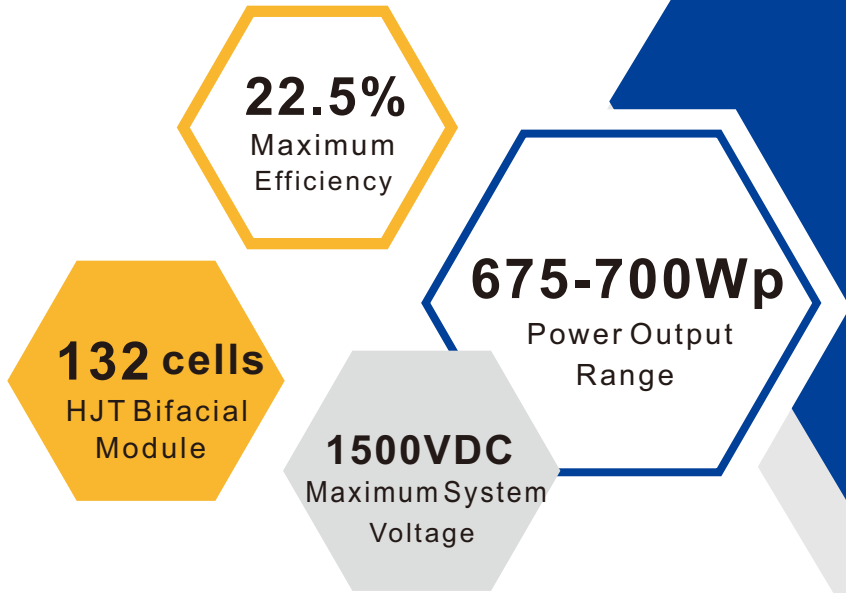


210 THIN WAFERS HJT BIFACIAL MODULE

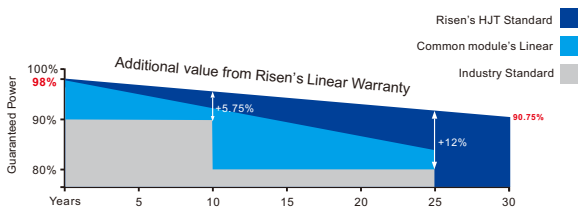


RSM132-8-675-700BHDG

KEY SALIENT FEATURES:

- Global, Tier 1 bankable brand, with independently certified state-of-the-art automated manufacturing
- N-type solar cell without LID caused by B-O
- No PID
- Better Temperature Coefficient
- Bifacial technology enables additional energy harvesting from rear side
- Positive power tolerance of 0~+3%
- Dual stage 100% EL Inspection warranting defect-free product
- Module Imp binning radically reduces string mismatch losses
- Excellent wind load 2400Pa & snow load 5400Pa under certain installation method
- Comprehensive product and system certification
 - ◆ IEC61215:2016; IEC61730-1/-2:2016;
 - ◆ ISO 9001:2015 Quality Management System
 - ◆ ISO 14001:2015 Environmental Management System
 - ◆ ISO 45001:2018 Occupational Health and Safety Management System

LINEAR PERFORMANCE WARRANTY



★ Please check the valid version of Limited Product Warranty which is officially released by Risen Energy Co., Ltd

- Product Warranty
- Linear Power Warranty
- Annual Degradation over 30 years



RISEN ENERGY CO., LTD.

Add: Tashan Industry Zone, Meilin, Ninghai 315609

Tel: 400-8291-000

Fax: +86-574-59953599

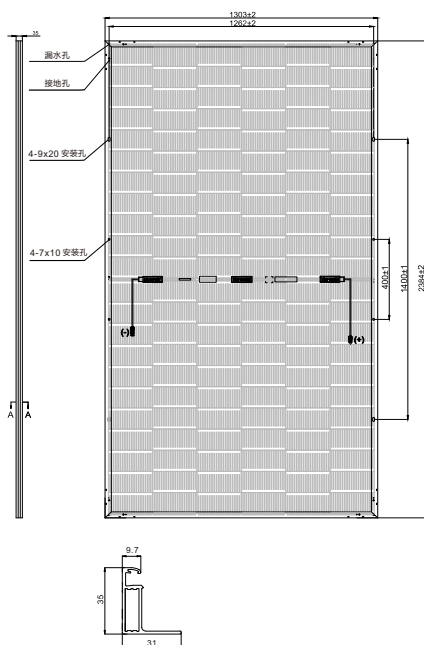
E-mail: marketing@risenenergy.com

Website: www.risenenergy.com



* As there are different certification requirements in different markets, please contact your local Risen Energy sales representative for the specific certificates applicable to the products in the region in which the products are to be used.

Dimensions of PV Module Unit: mm



ELECTRICAL DATA (STC)

Model Number	RSM132-8-675BHDG	RSM132-8-680BHDG	RSM132-8-685BHDG	RSM132-8-690BHDG	RSM132-8-695BHDG	RSM132-8-700BHDG
Rated Power in Watts-Pmax(Wp)	675	680	685	690	695	700
Open Circuit Voltage-Voc(V)	49.38	49.47	49.56	49.65	49.74	49.83
Short Circuit Current-Isc(A)	17.40	17.48	17.56	17.66	17.74	17.82
Maximum Power Voltage-Vmpp(V)	41.41	41.48	41.56	41.63	41.71	41.78
Maximum Power Current-Impp(A)	16.32	16.41	16.50	16.60	16.68	16.77
Module Efficiency (%) *	21.7	21.9	22.1	22.2	22.4	22.5

STC: Irradiance 1000 W/m², Cell Temperature 25°C, Air Mass AM1.5 according to EN 60904-3.
Bifacial factor:(%) 85±5 * Module Efficiency (%): Round-off to the nearest number

Electrical characteristics with 10% rear side power gain

	743	748	754	759	765	770
Total Equivalent power -Pmax (Wp)	743	748	754	759	765	770
Open Circuit Voltage-Voc(V)	49.38	49.47	49.56	49.65	49.74	49.83
Short Circuit Current-Isc(A)	19.14	19.23	19.32	19.43	19.51	19.60
Maximum Power Voltage-Vmpp(V)	41.41	41.48	41.56	41.63	41.71	41.78
Maximum Power Current-Impp(A)	17.95	18.05	18.15	18.26	18.35	18.44

Rear side power gain: The additional gain from the rear side compared to the power of the front side at the standard test condition. It depends on mounting (structure, height, tilt angle etc.) and albedo of the ground.

ELECTRICAL DATA (NMOT)

Model Number	RSM132-8-675BHDG	RSM132-8-680BHDG	RSM132-8-685BHDG	RSM132-8-690BHDG	RSM132-8-695BHDG	RSM132-8-700BHDG
Maximum Power-Pmax (Wp)	515.6	519.3	523.0	527.2	530.9	534.5
Open Circuit Voltage-Voc (V)	46.27	46.35	46.44	46.52	46.61	46.69
Short Circuit Current-Isc (A)	14.27	14.34	14.40	14.48	14.55	14.61
Maximum Power Voltage-Vmpp (V)	38.71	38.78	38.85	38.93	39.00	39.07
Maximum Power Current-Impp (A)	13.32	13.39	13.46	13.54	13.61	13.68

NMOT: Irradiance at 800 W/m², Ambient Temperature 20°C, Wind Speed 1 m/s.

MECHANICAL DATA

Solar cells	HJT cell
Cell configuration	132 cells (6×11+6×11)
Module dimensions	2384×1303×35mm
Weight	38.5kg
Superstrate	High Transmission, Low Iron, Tempered ARC Glass
Substrate	Tempered Glass
Frame	Anodized Aluminium Alloy type 6005-2T6, Silver Color
J-Box	Potted, IP68, 1500VDC, TÜV&UL Certified
Cables	4.0mm ² (12AWG), Positive(+)350mm, Negative(-)230mm (Connector Included)
Connector	Risen Twinsel PV-SY02, IP68

TEMPERATURE & MAXIMUM RATINGS

Nominal Module Operating Temperature (NMOT)	43°C±2°C
Temperature Coefficient of Voc	-0.22%/°C
Temperature Coefficient of Isc	0.047%/°C
Temperature Coefficient of Pmax	-0.24%/°C
Operational Temperature	-40°C~+85°C
Maximum System Voltage	1500VDC
Max Series Fuse Rating	35A
Limiting Reverse Current	35A

PACKAGING CONFIGURATION

	40ft(HQ)
Number of modules per container	558
Number of modules per pallet	31
Number of pallets per container	18
Packaging box dimensions (LxWxH) in mm	1320×1120×2515
Box gross weight[kg]	1245

CAUTION: READ SAFETY AND INSTALLATION INSTRUCTIONS BEFORE USING THE PRODUCT.

©2022 Risen Energy. All rights reserved. Contents included in this datasheet are subject to change without notice.
No special undertaking or warranty for the suitability of special purpose or being installed in extraordinary surroundings is granted unless as otherwise specifically committed by manufacturer in contract document.

Our Partners:



